



GAT MONTHLY MEMBERSHIP PROGRESS REPORT

Results as of: 4/30/2023

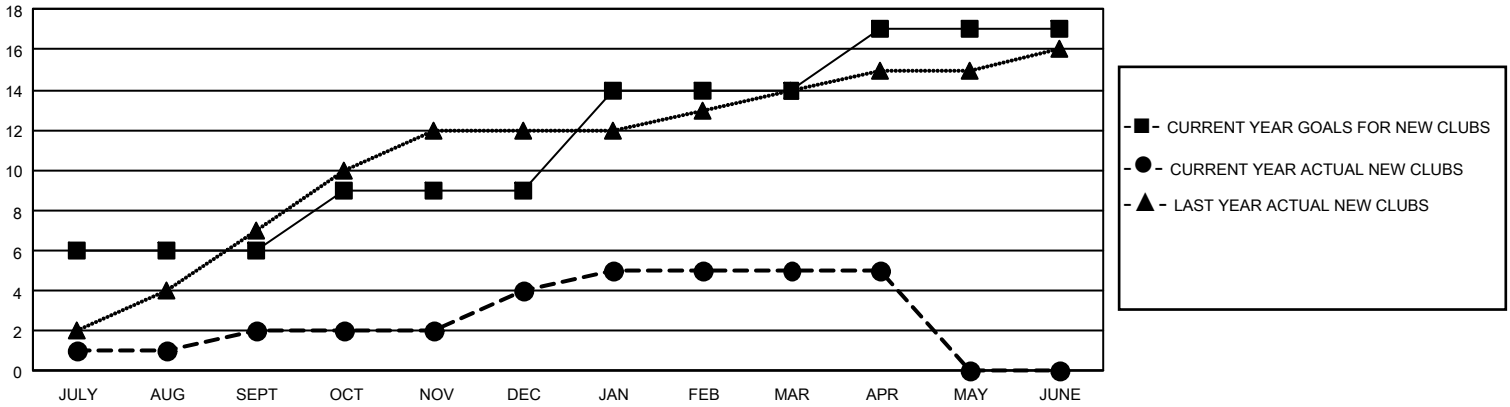
GMT Constitutional Area 5 - K, Group L

REPORT DOES NOT INCLUDE CLUBS IN UNDISTRICTED AREAS.

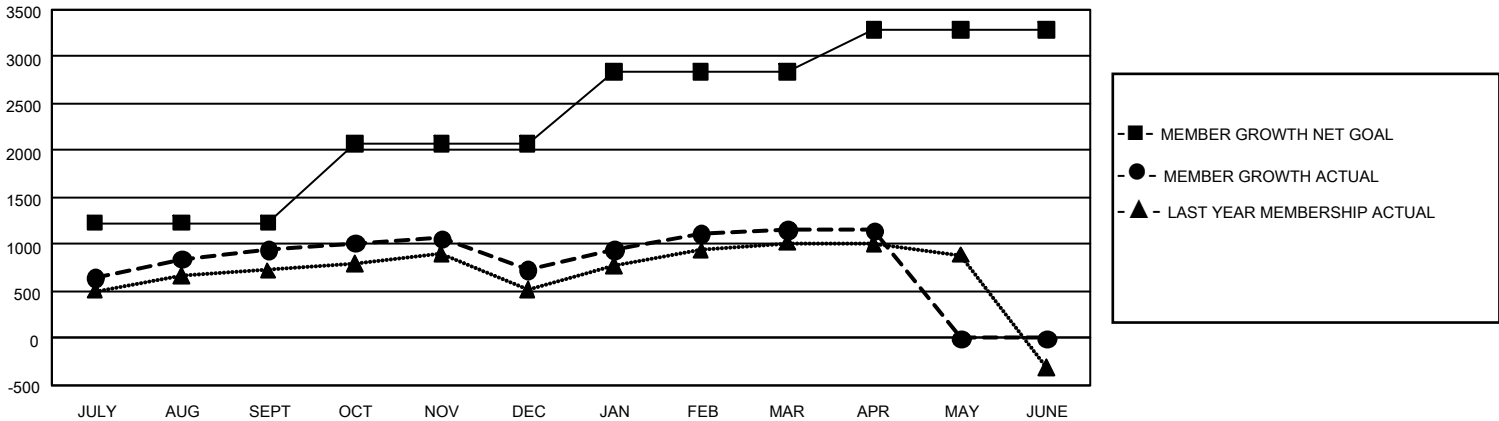
Clubs			
RESULTS FOR 2022-2023			
QUARTER	NEW CLUB GOAL	NEW CLUBS	DROPPED CLUBS
JULY/AUG/SEPT	18	2	4
OCT/NOV/DEC	9	2	2
JAN/FEB/MAR	15	1	2
APR/MAY/JUNE	9	0	0

Members			
RESULTS FOR 2022-2023			
QUARTER	MEMBER GROWTH NET GOAL	MEMBER GROWTH ACTUAL	DROPPED MEMBERS ACTUAL (including transfers)
JULY/AUG/SEPT	1230	1,770	745
OCT/NOV/DEC	840	727	931
JAN/FEB/MAR	765	1,013	531
APR/MAY/JUNE	450	157	148

GOALS AND ACTUAL NEW CLUBS CUMULATIVE



GOALS AND ACTUAL MEMBERS CUMULATIVE



DROPPED CLUBS: 8	510 CLUBS OF 622 ADDED 1 OR MORE NEW MEMBERS	GENDER DISTRIBUTION	
		MALE 18,788 (73.86%) FEMALE 6,650 (26.14%) NON BINARY 0 (0.00%) PREFER NOT TO ANSWER 0 (0.00%)	
DROPPED MEMBERS		CLICK HERE FOR CUMULATIVE MEMBERSHIP DATA	TOTAL FAMILY UNIT MEMBERS 922
DECEASED 88 CLUB CANCELLED 71 OTHER 2,196 TOTAL 2,355	FAMILY MEMBERS PAYING HALF DUES 526		